

Fiber Fan-out / Break-out Cables - Premium

Description:

GoFoton's Fan-out/break-out fiber cable assemblies deliver the performance and reliability needed in today's demanding high-speed broadband and data networks.

GoFoton's Fan-out/break-out cables have many variations to choose from to fit your precise applications: MPO-to-LC, MPO-to-SC, MPO-to-MPO, LC-to-LC, LC-to-SC, and more! Performance is always guaranteed since all Go!Foton cable assemblies have been tested by Telcordia for compliance with GR-1435, GR-2866, Verizon TPR 9431, IEC-61754-7 and EIA/TIA-604-5.

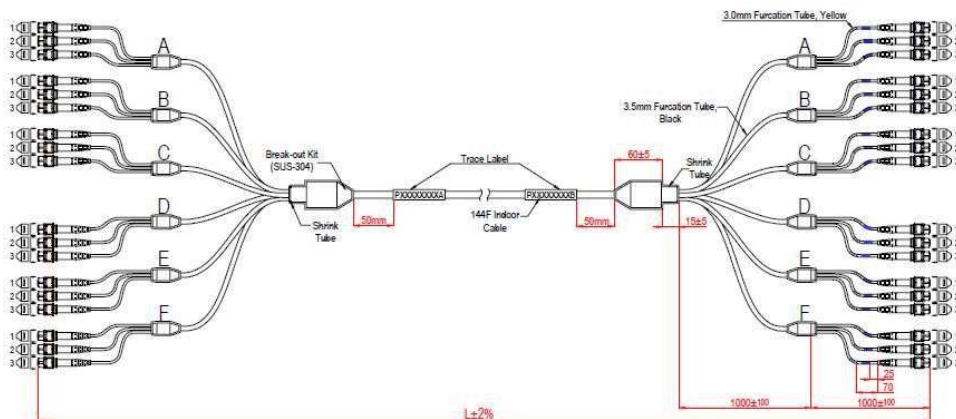


Applications:

- Telecommunication Networks
- Data Communication Networks
- Optical System Access Networks
- Broadband / CATV Networks
- Equipment / Switch Interconnections
- Fiber to the Antenna (FTTA)



Sample Schematic Diagram:



Superior Quality and Performance:

Every connector termination we make is 100% tested prior to shipping to confirm that it meets the highest performance standards.

- Four wavelength testing ensures that your jumpers will support the demanding requirements for 10G/40G/100G transmission and next generation PON deployment.
- All fiber cable assemblies are free of hazardous substances in compliance with RoHS 2002/95/EG
- Complies with Verizon TPR-9431, IEC-61754-7 and EIA/TIA-604-5, GR-1435-CORE and GR-2866

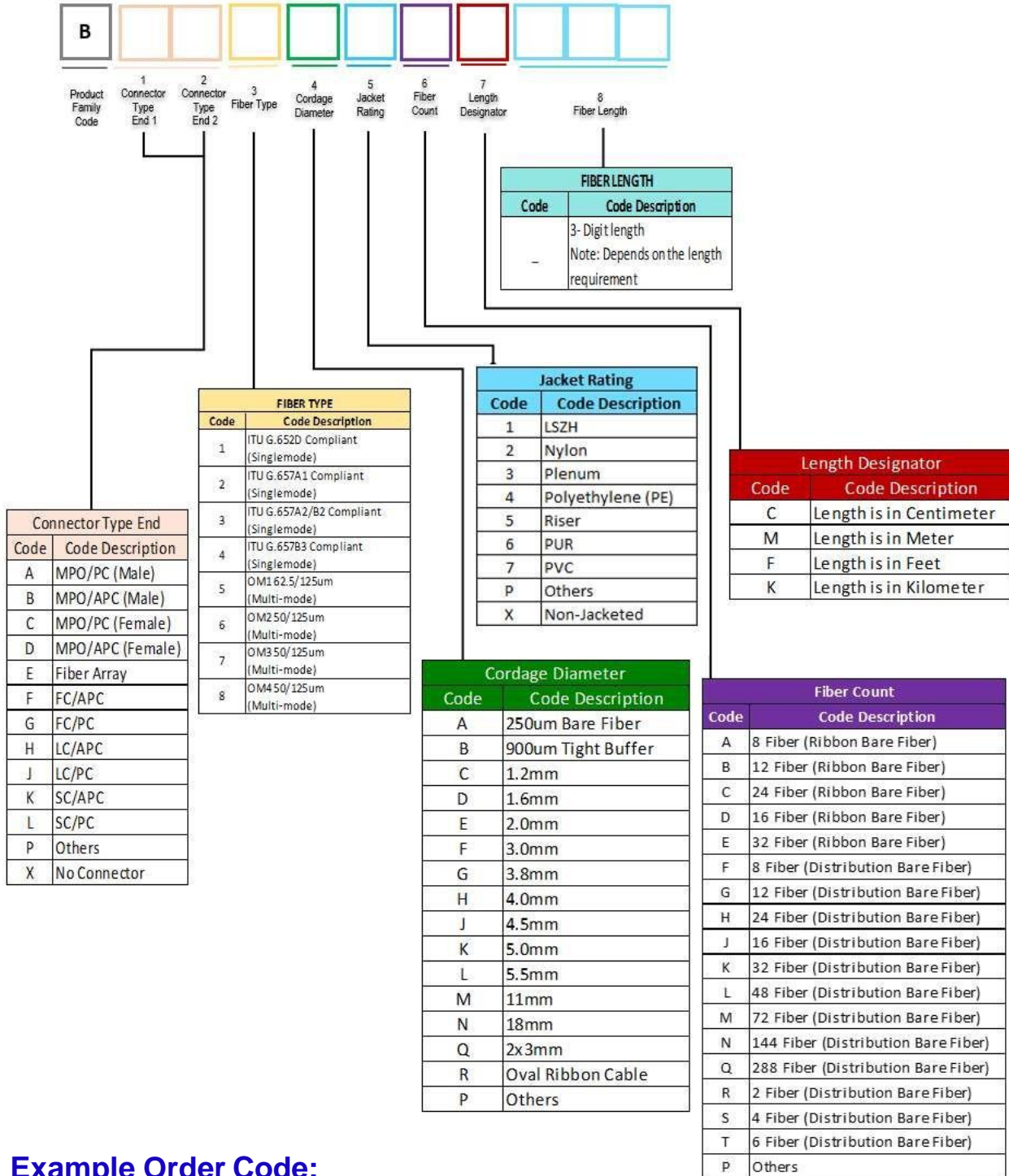
Go!Foton manufactures a wide variety of single mode and multimode optical fiber jumpers for telecom and data center applications. Our state of the art manufacturing process is recognized by leading global service providers as one of the best in the industry. We attribute our success to the highly dedicated and skilled production team which starts by selecting only the highest quality fiber and connector components. Each of our valued technicians are expertly trained in assembling and polishing connectors to near perfection. With a relentless commitment to quality, we offer only products meeting and exceeding unsurpassed optical performance. Remarkably, we do this while maintaining a highly efficient production operation which ensures you get these highest quality jumpers in a timely fashion at highly competitive, market prices.

Specifications:

Type of Connector	Parameters		Low Loss	Standard	Unit
Multi-Fiber Connector	Insertion Loss	Single Mode	≤0.35	≤0.70	dB
		Multimode	≤0.45	≤0.70	dB
	Return Loss	Single Mode	≥55	≥55	dB
		Multimode	≥28	≥20	dB
Single Fiber Connector	Insertion Loss	Single Mode PC	≤0.25	≤0.40	dB
		Single Mode APC	≤0.30	≤0.40	dB
		Multimode	≤0.50	≤0.70	dB
	Return Loss	Single Mode PC	≥55	≥40	dB
		Single Mode APC	≥65	≥60	dB
		Multimode	≥30	≥20	dB
	Operating Wavelength	Single Mode	1310/1550		nm
		Multimode	850/1300		
	Length Tolerance	+2% of the total cable length			
	Jacket Color	Yellow	SMF G652 and G657 Fiber		
		Orange	OM1 62.5/125um, OM2 50/125um		
Aqua		OM3 50/125, OM4 50/125um			



Ordering Guide:



Example Order Code:

BJL3M5MM002 → (LC/PC-to-SC-PC, Singlemode, 11mm Diameter, Riser Rated Jacket, 2M Length)

