

PEACOC® High-Density Fiber Distribution Frame

The **PEACOC** Fiber Distribution Frame is an open framed rack designed to mount a variety of fiber optic panels and equipment and to accurately route, manage, and store large volumes of fiber cables for quick, easy, and safe turnup of new services and connections. Using Go!Foton's innovative Spreadable Adapter Technology, the Go!Foton PEACOC Fiber Distribution Frame will provide up to 5,760 total fiber connection ports in a 7-foot frame configuration. The optical port density can be increased even further with the use of smaller form factor connectors, or by integrating multi-fiber push-on (MPO) connectors.

Features:

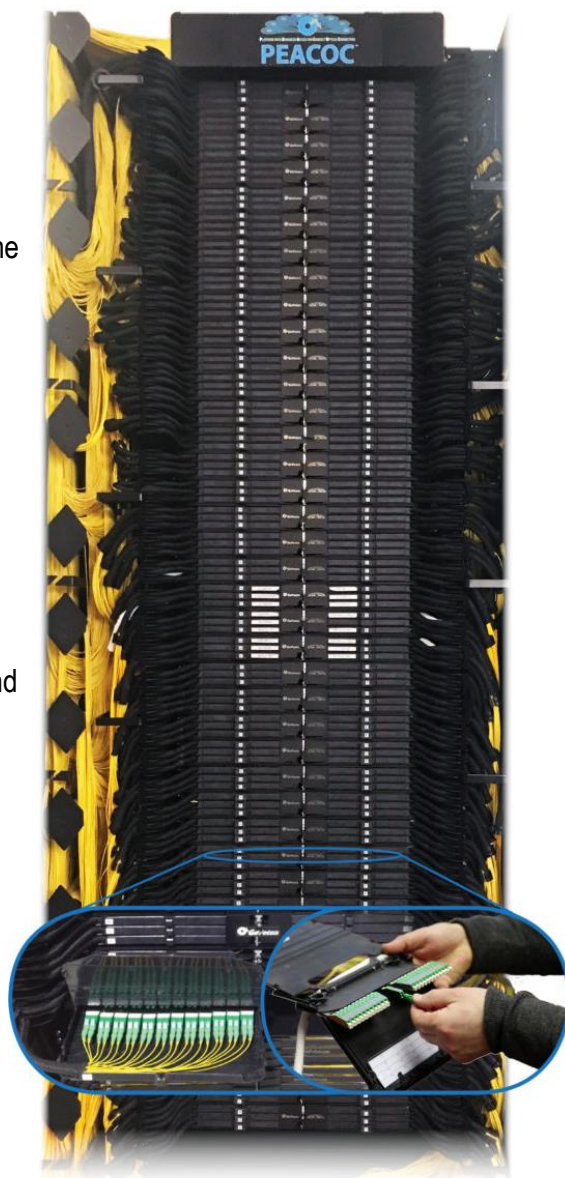
- 5,760 LC port capacity / 2,880 SC port capacity
- Ideal for today's small yet rugged 1.2mm patch cords
- Applicable for 19" and 23" equipment mounting widths
- Innovative droppable (or fixed) fiber troughs for routing cables from one side to the other side of the frame
- Top and bottom troughs manage fibers in/out of the frame and can be configured to route fibers between frames
- Optional configurations for 4,320 LC ports (five 6RU panel groups) and 3,456 LC ports (six 4RU panel groups)
- Accommodates optional Splice Chassis
- Bonding and grounding ready
- Telcordia® GR-449-CORE, Issue 3 compliant
- Optional 9-foot size available for even higher port counts

Applications:

- Telecommunication Networks
- Data Center Networks
- Broadband / CATV Networks
- Optical System Access Networks

Specifications:

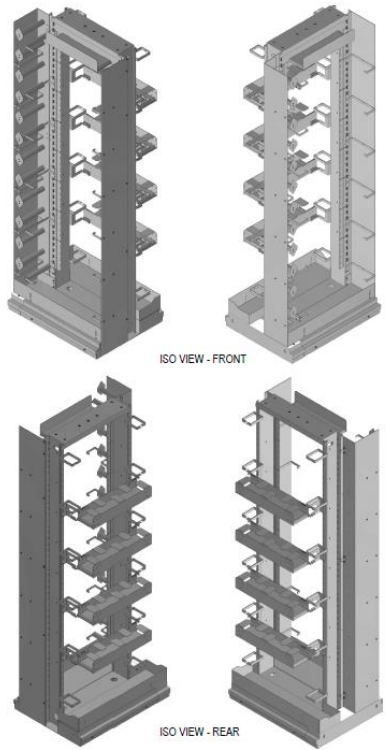
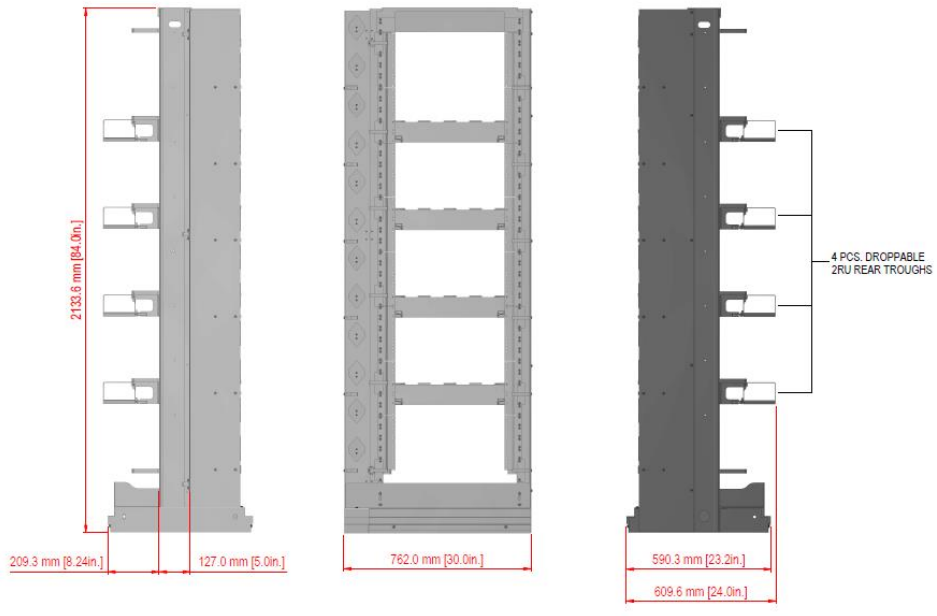
Dimensions (7' frame)	30" D x 23¼" W x 84" H
Total Rack Unit Capacity	40RU
Total Number of Ports	5,760 LC / 2,880 SC (using PEACOC high-density patch panels)
Rack Mounting	23" Rack Standard (convertible to 19" using adapter brackets)
Color	Matte Black



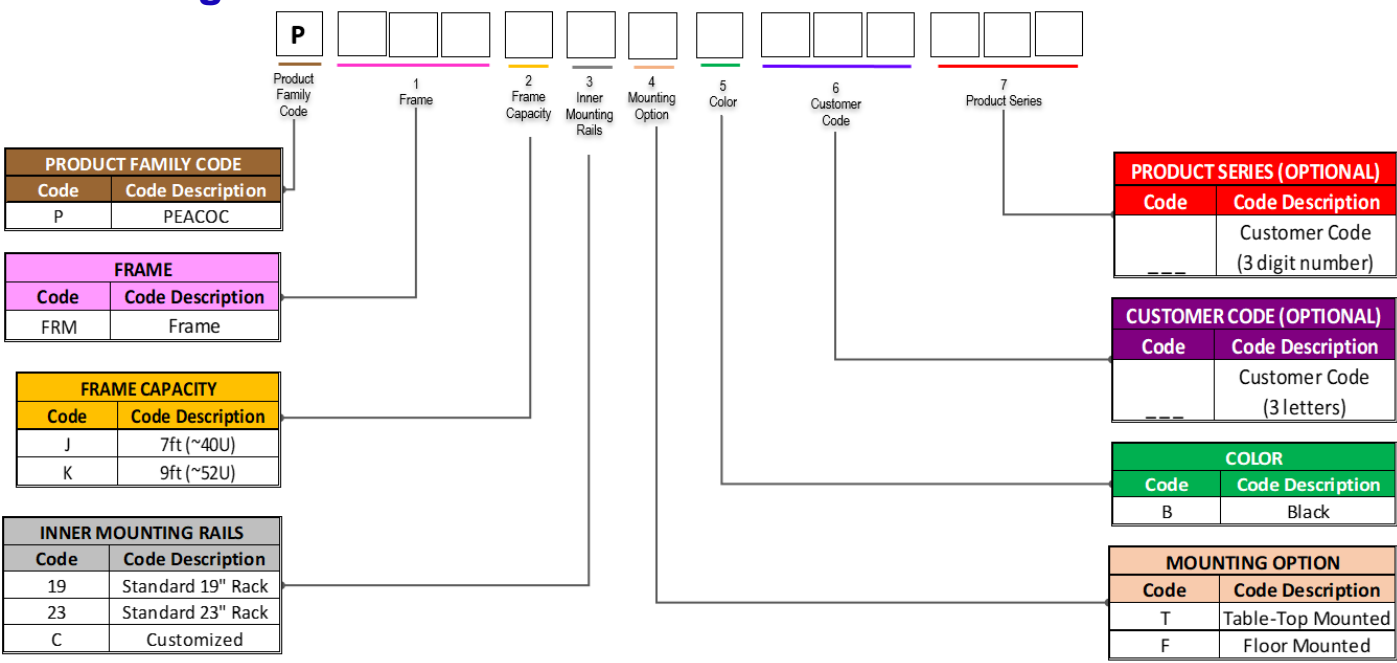
PEACOC® High-Density Fiber Distribution Frame

Product Dimensions:

7FT FRAME



Ordering Guide:



For specific configuration, please contact our Customer Sales Representative for Ordering Code